



SIMON BOLIVAR PARK

1 SW SOUTH RIVER DRIVE, MIAMI, FLORIDA



DESIGN CONCEPT



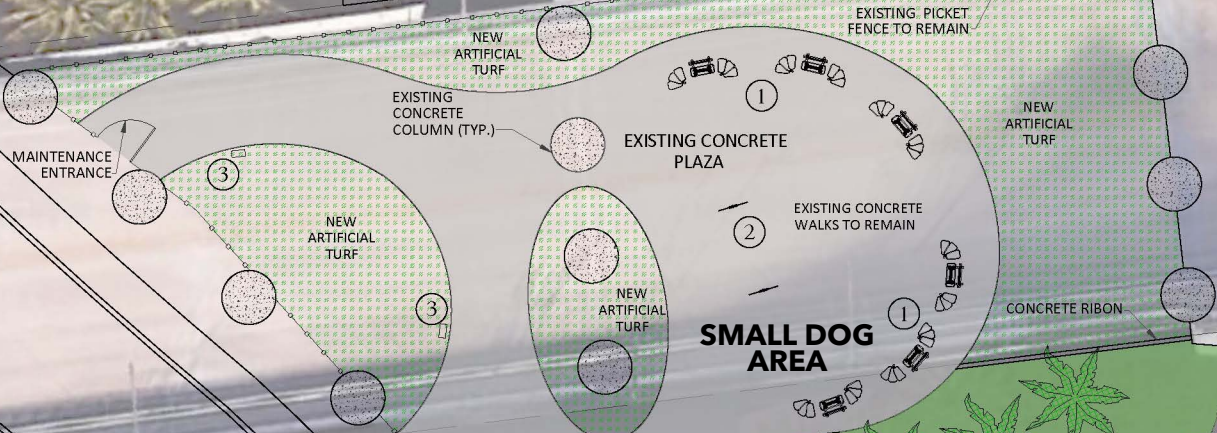
LET'S PLAY UNDER THE BRIDGE



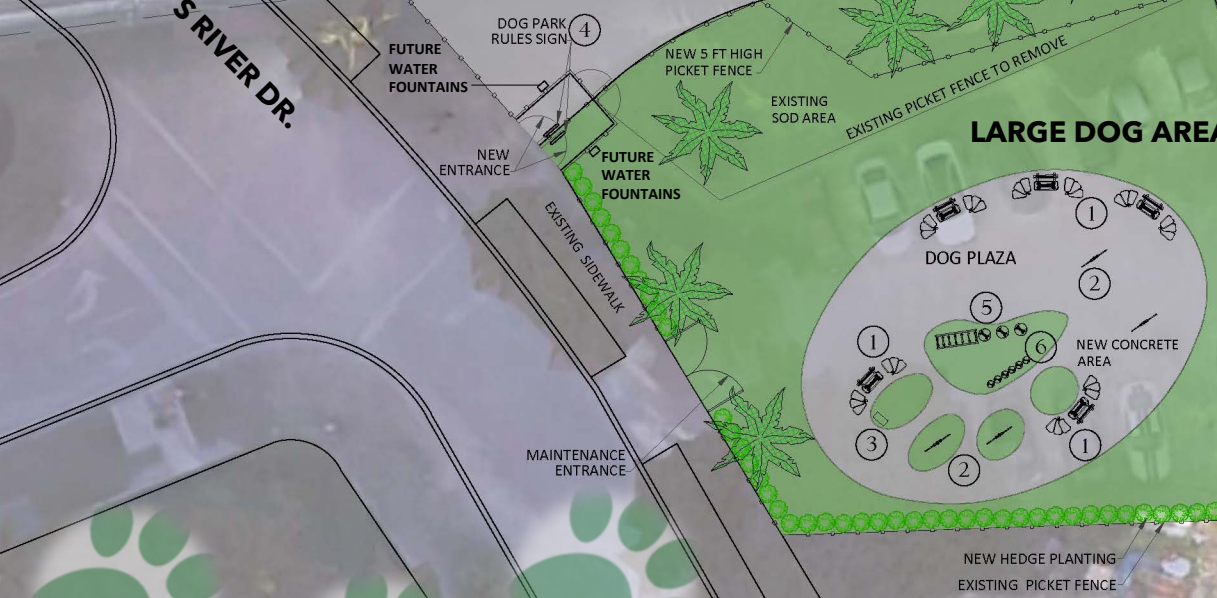


W. FLAGLER STREET

S RIVER DR.



SMALL DOG AREA



LARGE DOG AREA

LEGEND

- ① BENCHES
- ② HOOPS (DOG EQUIPMENT)
- ③ WASTE STATIONS
- ④ PARK SIGN
- ⑤ RAMP
- ⑥ STEPS

CONCRETE	
SOD	
ARTIFICIAL TURF	

SKETCH - PLAN VIEW N.T.S.



SMALL DOG AREA - EXISTING SPACE UNDER THE BRIDGE



1 - BENCHES



2 - HOOPS



3 - WASTE STATIONS



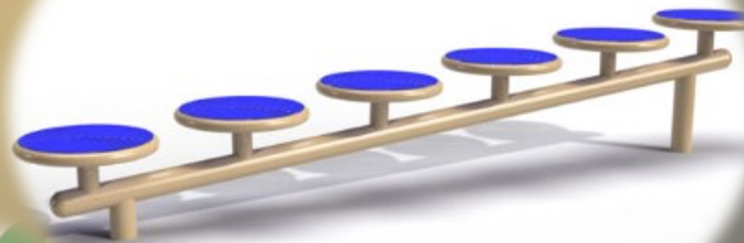
4 - PARK SIGN



LARGE DOG AREA - NEW SPACE



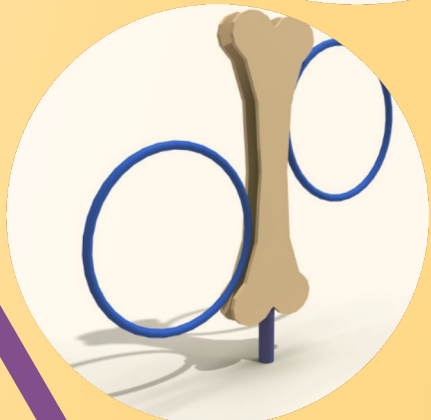
1 - BENCHES



6 - STEPS



3 - WASTE STATIONS



2 - HOOP



5 - RAMP



4 - PARK SIGN

NEXT STEPS

A- CONTACT FDOT PRELIMINARY CONCEPT PLAN APPROVAL

B - SCHEMATIC DESIGN FOR COMMUNITY MEETING

C - COMPLETE DESIGN AND CONSTRUCTION DOCUMENTS





W. FLAGLER STREET

PROJECT LOCATION

S. RIVER DR.

SW 1st STREET

SW 2nd STREET

SW 4th AVENUE

SW 3rd STREET

JOSE MARTI PARK

